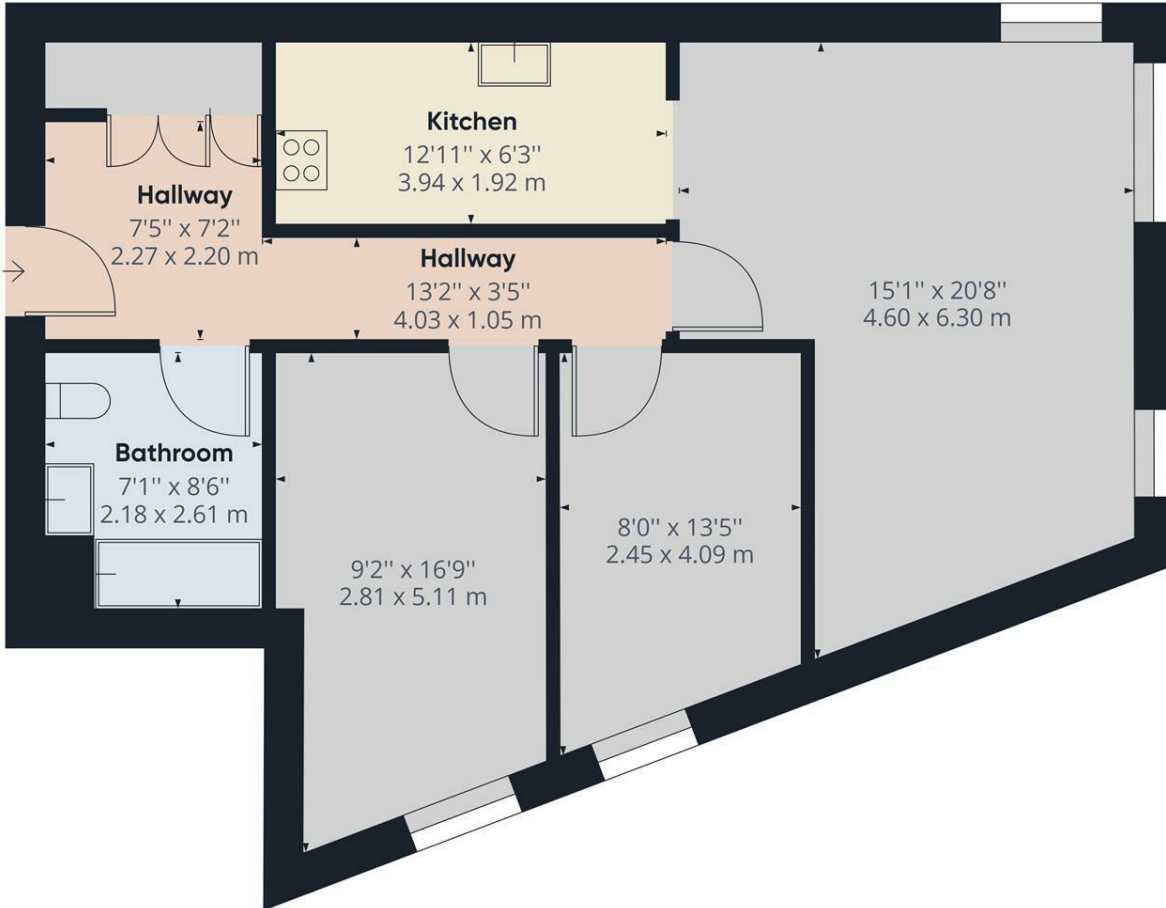




Apt 164 Pinsent, Sheffield S3 8NG **£800 Per Calendar Month**

Forming part of this magnificent residential development close to Sheffield City centre and commuting motorways is this larger than average two bedroomed first-floor apartment. Having security intercom entrance, lift access, and contemporary fitted kitchen. The accommodation must be viewed to be fully appreciated and comprises Entrance hall with storage space, open plan sitting/dining room, fitted kitchen with integrated appliances, master bedroom, generous sized double bedroom two, and bathroom with shower over bath. PART-FURNISHED. 6 MONTH TENANCY. Restrictions: No smokers, students, sharers, or pets. Energy Efficiency Rating E. Council Tax Band C

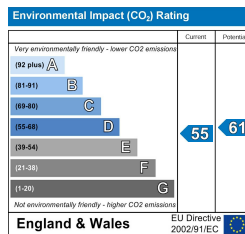
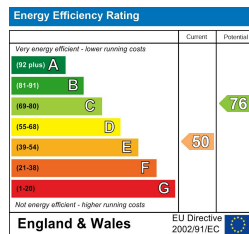


Approximate total area⁽¹⁾
752.45 ft²
69.90 m²

(1) Excluding balconies and terraces

While every attempt has been made to ensure accuracy, all measurements are approximate, not to scale. This floor plan is for illustrative purposes only.

GIRAFFE360



Banner Cross
Hathersage
Bakewell
Matlock
www.saxtonmee.co.uk

949-951 Ecclesall Road, Sheffield S11 8TN
3 Bank View, Main Road, Hathersage S32 1BB
Matlock Street, Bakewell DE45 1EE
27 Causeway Lane, Matlock, DE4 3AR

T: 0114 268 3241
T: 01433 650009
T: 01629 815307
T: 01629 828250

E: bannercross@saxtonmee.co.uk
E: hathersage@saxtonmee.co.uk
E: bakewell@saxtonmee.co.uk
E: matlock@saxtonmee.co.uk